



# Product Portfolio

Lean Logistics

The backbone of Lean manufacturing



# Index

Lean Dolly Type I .....	4
Lean Dolly Type II.....	5
Lean Dolly Type III.....	6
Lean Dolly Type V .....	7
Lean Dolly Type VII.....	8
Lean Dolly Type VIIC with elevated deck .....	9
Lean Dolly 600 x 800 mm.....	10
Lean Adaptor Pallet .....	11
Lean Pallet Size Dolly.....	12
Mini Lean Pallet Size Dolly .....	13
Lean Pallet Size Dolly with elevated deck.....	14
Lean Shelf Wagon .....	15
Lean Shelf Wagon Flow Rack .....	16
Lean Taxi Wagon .....	17
Lean Taxiliner .....	18
Lean CarryMore® E-frame System 1000 .....	19
Lean CarryMore® E-frame System 1500 .....	20
LiftLiner TwinLift .....	21
ElephantBoard® and Daughter Cart for the LiftLiner .....	22
Accessories – Wheel overview .....	23
Accessories – Safety and ergonomics .....	24
Accessories – Dirt prevention.....	25
Accessories – Connecting devices .....	26
Visimore® – Asset Management .....	27
Our Customers.....	28

# Keep things rolling with Lean Logistics

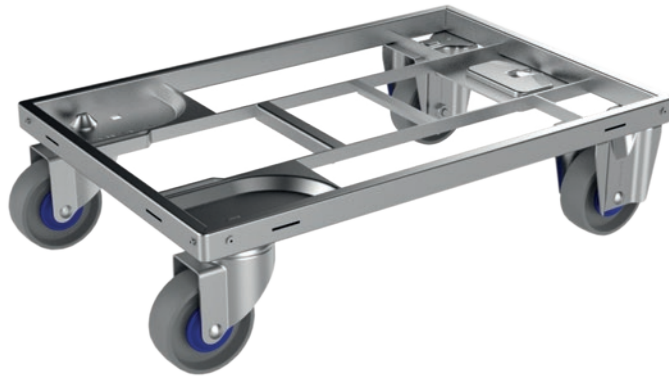


## Benefits

- Improve work flow
- Reduce handling costs
- Enable reduction of stock level
- Reduce need for floor space
- Improve ergonomics
- Fast and safe truck loading



# Lean Dolly Type I



TECHNICAL SPECIFICATION	
External dimensions	600 x 400 x 162 mm
Tare weight with CPD wheels, no corners	6,5 kg
Wheel size	100 mm wheels
Wheel configuration	2 fixed & 2 swivel
Wheel material	CPD, rubber or PU
Maximum Load capacity	
- CPD – standard and ESD	250 kg
- Rubber – standard and ESD	250 kg
- PU – standard and ESD	250 kg
Surface treatment	Blue zinc plated acc. to EN-ISO2081
Safe stacking	up to 15 units (1950 mm)
Compatibility with Lean Adaptor Pallets	- Next Generation (DOS1696 & DOS1725) - Type III (DOS1405)

## OPTIONS

- Total brake on 1 or 2 swivel wheels
- RFID and Tracking compatibility
- Corner supports
- ESD compatibility

## ALSO AVAILABLE IN ISO- AND US-DIMENSIONS

- 600 x 500 mm
- 24" x 15"
- 24" x 22.5"

## DESIGNED TO CARRY SLC'S AND TRAYS

- 1 stack of 600 x 400 mm
- 2 stacks of 300 x 400 mm
- 4 stacks of 300 x 200 mm

## ACCESSORIES

- Ergonomic handle
- Strapping device
- Oil dripping pan



# Lean Dolly Type II



www.tuv.com  
ID 0000040591



## TECHNICAL SPECIFICATION

External dimensions	600 x 400 x 162 mm
Tare weight with CPD wheels, no corners	7,0 kg
Wheel size	100 mm wheels
Wheel configuration	4 swivel
Wheel material	CPD, rubber or PU
Maximum Load capacity:	
- CPD – standard and ESD	250 kg
- Rubber – standard and ESD	250 kg
- PU – standard and ESD	250 kg
Surface treatment	Blue zinc plated acc. to EN-ISO2081
Safe stacking	up to 15 units (1950 mm)
Compatibility with Lean Adaptor Pallets	- Next Generation (DOS1696 & DOS1725) - Type III (DOS1405)

## OPTIONS

- Total brake on 1 or 2 swivel wheels
- RFID and Tracking compatibility
- Corner supports
- ESD compatibility

## ALSO AVAILABLE IN ISO- AND US-DIMENSIONS

- 600 x 500 mm
- 24" x 15"
- 24" x 22.5"

## DESIGNED TO CARRY SLC'S AND TRAYS

- 1 stack of 600 x 400 mm
- 2 stacks of 300 x 400 mm
- 4 stacks of 300 x 200 mm

## ACCESSORIES

- Ergonomic handle
- Strapping device
- Oil dripping pan

# Lean Dolly Type III



With 4 swivel wheels



TECHNICAL SPECIFICATION	
External dimensions	400 x 400 x 178,5 mm
Tare weight with CPD wheels	6 kg
Wheel size	100 mm wheels
Wheel configuration	2 fixed & 2 swivel or 4 swivel
Wheel material	CPD, rubber or PU
Maximum Load capacity:	
- CPD – standard and ESD	160 kg
- Rubber – standard and ESD	160 kg
- PU – standard and ESD	160 kg
Surface treatment	Blue zinc plated acc. to EN-ISO2081
Safe stacking	up to 8 units (1200 mm)
Compatibility with Lean Adaptor Pallets	- Next Generation (DOS1696 & DOS1725) - Type III (DOS1405)

## OPTIONS

- Total brake on 1 or 2 swivel wheels
- RFID & Tracking compatibility
- ESD compatibility

## DESIGNED TO CARRY SLC'S AND TRAYS

- 1 stack of 400 x 400 mm

## ACCESSORIES

- Ergonomic handle
- Strapping device

# Lean Dolly Type V



TECHNICAL SPECIFICATION	
External dimensions	604 x 404 x 157 mm
Tare weight with CPD wheels, with corners	7,5 kg
Wheel size	100 mm wheels
Wheel configuration	4 swivel
Wheel material	CPD, rubber or PU
Maximum Load capacity:	
- CPD – standard and ESD	250 kg
- Rubber– standard and ESD	250 kg
- PU – standard and ESD	250 kg
Surface treatment	Blue zinc plated acc. to EN-ISO2081
Safe stacking	up to 15 units (1950 mm)
Compatibility with Lean Adaptor Pallets	- Next Generation (DOS1696 & DOS1725) - Type III (DOS1405)

## OPTIONS

- Total brake on 1 or 2 swivel wheels
- RFID & Tracking compatibility
- ESD compatibility

## ALSO AVAILABLE IN ISO- AND US-DIMENSIONS

- 600 x 500 mm
- 24" x 15"
- 24" x 22.5"

## DESIGNED TO CARRY SLC'S AND TRAYS

- 1 stack of 600 x 400 mm
- 2 stacks of 300 x 400 mm
- 4 stacks of 300 x 200 mm

## ACCESSORIES

- Ergonomic handle
- Strapping device
- Oil dripping pan

# Lean Dolly Type VII



With sliding draw bar system



www.tuv.com  
ID 0000040591



## TECHNICAL SPECIFICATION

External dimensions	604 x 404 x 162 (382) mm
Tare weight with CPD wheels, no corners	7 kg
Wheel size	100 mm wheels
Wheel configuration	2 fixed & 2 swivel
Wheel material	CPD, rubber or PU
Maximum Load Capacity:	
- CPD – standard and ESD	250 kg
- Rubber – standard and ESD	250 kg
- PU – standard and ESD	250 kg
Maximum Load capacity in tugger train	1000 kg
Max amount per tugger train	7–8 units
Surface treatment	Blue zinc plated acc. to EN-ISO2081
Safe stacking	up to 15 units (1955 mm)
Compatibility with Lean Adaptor Pallets	- Next Generation (DOS1696 & DOS1725) - Type III (DOS1405)
Recommended max speed	6 km/h

## OPTIONS

- Total brake on 1 or 2 swivel wheels
- RFID & Tracking compatibility
- Corner supports
- Stealth version sliding tow system
- ESD compatibility

## ALSO AVAILABLE IN ISO AND US-DIMENSIONS

- 600 x 500 mm, 24" x 15", 24" x 22.5"

## DESIGNED TO CARRY SLC'S AND TRAYS

- 1 stack of 600 x 400 mm
- 2 stacks of 300 x 400 mm
- 4 stacks of 300 x 200 mm

## ACCESSORIES

- Ergonomic handle
- Strapping device
- Oil dripping pan



# Lean Dolly Type VIIC with elevated deck



TECHNICAL SPECIFICATION	
External dimensions	612 x 404 x 683 mm
Tare weight with CPD wheels, no corners	18 kg
Wheel size	100 mm wheels
Wheel configuration	2 fixed & 2 swivel
Wheel material	CPD, rubber or PU
Maximum Load Capacity:	
- CPD – standard and ESD	70 kg
- Rubber – standard and ESD	70 kg
- PU – standard and ESD	70 kg
Maximum Load capacity in tugger train	1000 kg
Max amount per tugger train	7–8 units
Surface treatment	Blue zinc plated acc. to EN-ISO2081
Safe stacking	up to 3 units (1955 mm)
Compatibility with Lean Adaptor Pallets	- Next Generation (DOS1696 & DOS1725) - Type III (DOS1405)
Recommended max speed	4 km/h

## OPTIONS

- Total brake on 1 or 2 swivel wheels
- RFID & Tracking compatibility
- ESD compatibility

## DESIGNED TO CARRY SLC'S AND TRAYS

- 1 stack of 600 x 400 mm
- 2 stacks of 300 x 400 mm
- 4 stacks of 300 x 200 mm

## ACCESSORIES

- Ergonomic handle
- Oil dripping pan

# Lean Dolly 600 x 800 mm



**With 5 swivel wheels**



**With draw bar**



TECHNICAL SPECIFICATION	
External dimensions	600 x 806 x 158 (495) mm
Tare weight with CPD wheels	12 kg
Wheel size	100 mm wheels
Wheel configuration	2 fixed & 3 swivel or 5 swivel
Wheel material	CPD, rubber or PU
Maximum Load Capacity:	
- CPD – standard and ESD	500 kg
- Rubber – standard and ESD	500 kg
- PU – standard and ESD	500 kg
Maximum Load capacity in tugger train	1600 kg
Max amount per tugger train	5–6 units
Surface treatment	Blue zinc plated acc. to EN-ISO2081
Safe stacking	up to 15 units (1955 mm) with towing arm 2,3 m
Compatibility with Lean Adaptor Pallets	- Next Generation (DOS1696 & DOS1725) - Type III (DOS1405)
Recommended max speed	6 km/h

## OPTIONS

- Total brake on 1 or 2 swivel wheels
- RFID & Tracking compatibility
- Corner supports
- Draw bar
- ESD compatibility

## ALSO AVAILABLE IN ISO-DIMENSIONS

- 600 x 1000 mm

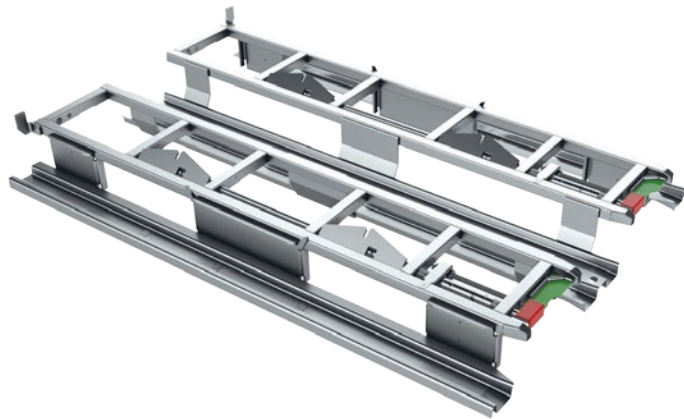
## DESIGNED TO CARRY SLC'S AND TRAYS

- 1 stack of 600 x 800 mm
- 2 stack of 600 x 400 mm
- 4 stacks of 300 x 400 mm
- pallets, foldable cages and stillages

## ACCESSORIES

- Strapping device
- Multipurpose plywood deck

# Lean Adaptor Pallet



www.tuv.com  
ID 0000040591



## TECHNICAL SPECIFICATION

External dimensions	1210 x 800 x 120 mm
Tare weight	37 kg
Maximum Load capacity	1000 kg
Surface treatment	Blue zinc plated acc. to EN-ISO2081
Safe stacking	
- loaded in transport	2 units
- loaded at warehouse	3 units
- empty	15 units

## DESIGNED FOR ALL STANDARD LEAN DOLLIES

## OPTIONS

- Non-slip features
- RFID & Tracking compatibility
- ESD compatibility

## ALSO AVAILABLE IN ISO AND US-DIMENSIONS

- 1200 x 1000 mm
- 48" x 30"
- 48" x 45"

## ACCESSORIES

- EasyStrap
- Compatible with industry standard lids

# Lean Pallet Size Dolly



With 6 wheels  
for 360° spinning



TECHNICAL SPECIFICATION	
External dimensions	1200 x 800 x 275 (1017) mm
Tare weight	66 kg
Wheel size	160 mm wheels
Wheel configuration	2 fixed & 2 swivel 4 swivel 2 fixed & 4 swivel
Wheel material	PU and CPD
Maximum Load capacity	1000 kg
Maximum Load capacity in tugger train	4000 kg
Max amount per tugger train	6 units
Surface treatment	Blue zinc plated acc. to EN-ISO2081
Safe stacking	up to 6 units (1680 mm) with "draw bar" (2,4 m)
Recommended max speed	6 km/h

**COMPATIBLE WITH ALL LEAN DOLLIES, LEAN SHELF WAGON, TAXI WAGON AND TAXILINER.**

## OPTIONS

- Available with anti slip material or plywood deck
- Integrated strapping device
- ESD compatibility
- Total brake on 1 or 2 swivel wheels
- RFID & Tracking compatibility
- Corner supports
- 360° spinning on 6 wheels
- Catch for towing one or two lines of Lean dollies
- Wheel spacer
- Forklift guide

## ALSO AVAILABLE IN ISO- AND US-DIMENSIONS

- 1200 x 1000 mm (72 kg)
- 48" x 45" (77 kg)
- 32" x 30" (53 kg)

## DESIGNED TO CARRY SLC'S, PALLETS AND BOXES

- Pallet sizes: Euro, ISO & 48" x 45"
- SLC's in Euro, ISO or US boxes
- Cages and foldable boxes



# Mini Lean Pallet Size Dolly



## TECHNICAL SPECIFICATION

External dimensions	923 x 600 x 280 (1019) mm
Tare weight	55 kg
Wheel size	160 mm wheels
Wheel configuration	2 fixed & 2 swivel or 4 swivel
Wheel material	PU and CPD
Maximum Load capacity	1000 kg
Maximum Load capacity in tugger train	4000 kg
Max amount per tugger train	6 units
Surface treatment	Blue zinc plated acc. to EN-ISO2081
Safe stacking	up to 6 units (1680 mm) with draw bar (2,4 m)
Recommended max speed	6 km/h

## OPTIONS

- Available with anti slip material or plywood deck
- Integrated strapping device
- ESD compatibility
- Total brake on 1 or 2 swivel wheels
- RFID & Tracking compatibility
- Corner supports
- Catch for towing one or two lines of Lean dollies
- Wheel spacer

## ALSO AVAILABLE IN US-DIMENSIONS

- 32" x 30"

## DESIGNED TO CARRY SLC'S, PALLETS AND BOXES

- Pallet sizes:  
800 x 600 mm or 32" x 30"
- Cages and foldable boxes

**COMPATIBLE WITH ALL LEAN DOLLIES, LEAN SHELF WAGON, TAXI WAGON AND TAXILINER.**

# Lean Pallet Size Dolly with elevated deck



TECHNICAL SPECIFICATION	
External dimensions	1200 x 800 x 600 mm
Tare weight	89 kg
Wheel size	160 mm wheels
Wheel configuration	2 fixed & 2 swivel 4 swivel 2 fixed & 4 swivel
Wheel material	PU and PA
Maximum Load capacity	1000 kg
Maximum Load capacity in tugger train	4000 kg
Max amount per tugger train	6 units
Surface treatment	Blue zinc plated acc. to EN-ISO2081
Safe stacking	up to 1680 mm (2,4 m with handle)
Recommended max speed	6 km/h

**COMPATIBLE WITH ALL LEAN DOLLIES, LEAN SHELF WAGON, TAXI WAGON AND TAXILINER.**

## OPTIONS

- Available with anti slip material or plywood deck
- Integrated strapping device
- ESD compatibility
- Total brake on 1 or 2 swivel wheels
- RFID & Tracking compatibility
- Corner supports
- 360° spinning on 6 wheels
- Catch for towing one or two lines of Lean dollies
- Wheel spacer
- Forklift guide

## ALSO AVAILABLE IN ISO- AND US-DIMENSIONS

- 1200 x 1000 mm (97 kg)
- 48" x 45" (90 kg)

## DESIGNED TO CARRY SLC'S, PALLETS AND BOXES

- Pallet sizes: Euro, ISO & 48" x 45"
- SLC's in Euro, ISO or US boxes
- Cages and foldable boxes

# Lean Shelf Wagon



## TECHNICAL SPECIFICATION

External dimensions	1260 x 806 x 1680 mm
Tare weight (2 shelves + floor)	113 kg
Wheel size	160 mm wheels
Wheel configuration	2 fixed and 2 swivel
Wheel material	PU and CPD
Surface treatment	Blue zinc plated acc. to EN-ISO2081
Maximum Load capacity	Per Shelf: 150 kg or 250 kg (heavy-duty) Per Unit: 450 kg or 800 kg (heavy-duty)
Max amount in tugger trains	6 units
Recommended max speed	6 km/h

## OPTIONS

- ESD compatibility
- Total brake on 1 or 2 swivel wheels
- RFID & Tracking compatibility
- 6 wheel option for 360° spinning
- Catch for towing one or two lines of Lean dollies
- Wheel spacer
- Forklift guide

## DESIGNED TO CARRY SLC'S AND TRAYS AND OTHER BOXES

## ACCESSORIES

- Transport & non-contamination cover

**COMPATIBLE WITH ALL LEAN DOLLIES, LEAN SHELF WAGON, TAXI WAGON AND TAXILINER.**

# Lean Shelf Wagon Flow Rack



www.tuv.com  
ID: 2000040091



## TECHNICAL SPECIFICATIONS

External dimensions	1300 x 806 x 1680 mm
Tare weight	70–75 kg
Wheel size	160 mm wheels
Wheel configuration	2 fixed and 2 swivel
Wheel material	PU and CPD
Maximum Load capacity	Per shelf: 150 kg Per unit: 450 kg
Surface treatment	Blue zinc plated acc. to EN-ISO2081
Recommended max speed	6 km/h

## OPTIONS

- Integrated strapping device
- ESD compatibility
- Total brake on 1 or 2 swivel wheels
- RFID & Tracking compatibility
- 6 wheel option for 360° spinning

**DESIGNED TO CARRY SLC'S AND TRAYS AND OTHER BOXES**



# Lean Taxi Wagon



**2 Bay Version**



**3 Bay Version**



TECHNICAL SPECIFICATION	2 Bay Version	3 Bay Version
External dimensions	1456 x 1425 x 725 mm	1908 x 1425 x 725 mm
Length including the draw bar	1835 mm	2287 mm
Space between dividers	410 mm	410 mm
Maximum Load capacity	500 kg	750 kg
Tare weight	147 kg	175 kg
Maximum Train load	2250 kg	2250 kg
Maximum speed	6 km/h	6 km/h
Min. turning circle	3570 mm	4100 mm
Ramp elevation for Dollies	70 mm	72 mm
Ground clearance	38 mm	40 mm
Steering system	Reverse draw bar	Reverse draw bar
Surface treatment	Powder coating	Powder coating

### DESIGNED TO CARRY

- 600 x 400 mm Dollies
- Also ISO and US sized Dollies

### BENEFITS

- Ideal for logistic flows where the sequence cannot be controlled
- Reduce handling costs
- Enables the delivery of multiple article numbers in one delivery sequence
- Improve ergonomics
- Fast and safe internal transport
- Excellent tracking and steering stability

### OPTIONS

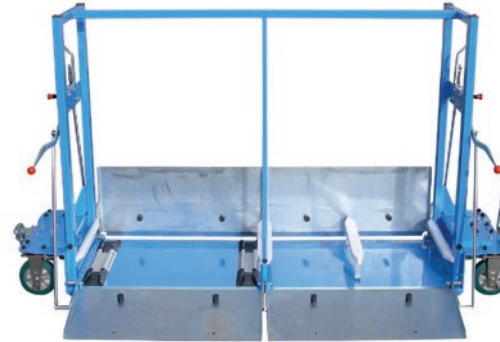
- Non-slip feature for the ramps
- Double locking device
- Additional floor guidance
- ESD compatibility
- RFID & Tracking compatibility
- 600 x 800 Lean Dollies compatibility

**COMPATIBLE WITH ALL LEAN PALLET SIZE DOLLY AND LEAN SHELF WAGON.**

# Lean Taxiliner



3 Bay Version



4 Bay Version



TECHNICAL SPECIFICATION	3 Bay Version	4 Bay version
External dimensions	2031 x 1425 x 725 mm	2496 x 1430 x 725 mm
Length including the draw bar	2540 mm	3001 mm
Space between dividers	410 mm	410 mm
Maximum Load capacity	750 kg	750 kg
Tare weight	215 kg	282 kg
Maximum Train load	2250 kg	2250 kg
Maximum speed	15 km/h	12 km/h
Min. turning circle	3800 mm	4350 mm
Ramp elevation for Dollies	72 mm	80 mm
Ground clearance	40 mm	38 mm
Steering system SpurTrak™	All wheel Steer	All wheel Steer
Surface treatment	Powder coating	Powder coating

**DESIGNED TO CARRY**

- 600 x 400 mm Dollies
- Also ISO and US sized Dollies

**BENEFITS**

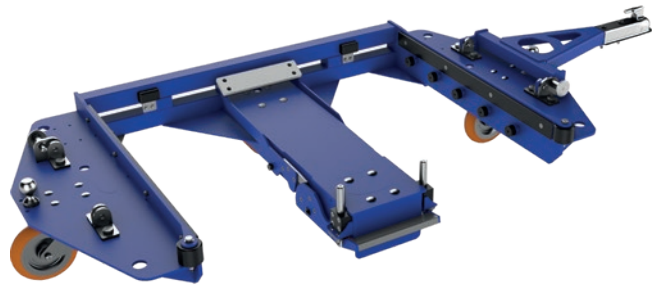
- Ideal for logistic flows where the sequence cannot be controlled
- Reduce handling costs
- Enables the delivery of multiple article numbers in one delivery sequence
- Improve ergonomics
- Fast and safe internal transport
- Excellent tracking and steering stability

**OPTIONS**

- Non-slip feature for the ramps
- Double locking device
- Additional floor guidance
- ESD compatibility
- RFID & Tracking compatibility
- 600 x 800 mm Dollies compatibility

**COMPATIBLE WITH ALL LEAN PALLET SIZE DOLLY AND LEAN SHELF WAGON.**

# Lean CarryMore® E-frame System 1000



**Mother cart**



**Daughter cart**



TECHNICAL SPECIFICATION LEAN CARRYMORE® MOTHER CART 1000	
External dimensions	2549 x 1091 x 380 mm
Tare weight	200 kg
Steering system	Center-steer: 2 fixed center wheels and spring loaded swivel wheel at front back. All wheels are high payload polyurethane wheels
Maximum Load Capacity	at 8 km/h 1000 kg • at 11 km/h 1000 kg • at 16 km/h 850 kg
Surface treatment	Powder coating
Train configuration	Can include up to 5–6 units

TECHNICAL SPECIFICATION LEAN CARRYMORE® DAUGHTER CART 1000	
External dimensions	1248 x 989 x 302 mm / 1248 x 1189 x 382 mm
Height with the handle	1016 mm / 1096 mm
Tare weight	46 kg / 60 kg
Wheel type	2 fixed and 2 swivel or 4 swivel
Wheel material	PA
Surface treatment	Blue zinc plated

## BENEFITS

- Eliminate the need for forklifts and reduce the risk of accidents at manufacturing and assembly lines
- Lower maintenance costs
- Reduce overall operator costs
- Require only one operator making multiple deliveries on one route trip
- Enable to carry smaller and kitted loads in addition to pallet units in the same train
- Faster delivery rates - takes seconds to unload

## CarryMore® mother cart 1000 is designed to hold:

- One Daughter cart 1200 x 800 mm or
- One Daughter cart 1200 x 1000 mm or
- Customized carts measuring up to 1625 x 1270 mm



# Lean CarryMore® E-frame System 1500



**Mother cart**

**Daughter cart**



TECHNICAL SPECIFICATION LEAN CARRY MORE® MOTHER CART 1500	
External dimensions	2866 x 1214 x 430 mm
Tare weight	266 kg
Steering system	Quad-steer: 4 fixed wheels. The design is based on the Tight Turn technology™ for impressively tight and precise turning radius capability. All wheels are high payload polyurethane wheels
Maximum Load Capacity	at 8 km/h 1500 kg • at 11 km/h 1100 kg • at 16 km/h 750 kg
Surface treatment	Powder coating
Train configuration	Can include up to 5–6 units

TECHNICAL SPECIFICATION LEAN CARRY MORE® DAUGHTER CART 1500	
External dimensions	1248 x 989 x 302 mm / 1248 x 1189 x 382 mm
Height with the handle	1016 mm / 1096 mm
Tare weight	46 kg / 60 kg
Wheel type	2 fixed & 2 swivel or 4 swivel
Wheel material	PA
Surface treatment	Blue zinc plated

## BENEFITS

- Eliminate the need for forklifts and reduce the risk of accidents at manufacturing and assembly lines
- Lower maintenance costs
- Reduce overall operator costs
- Require only one operator making multiple deliveries on one route trip
- Enable to carry smaller and kitted loads in addition to pallet units in the same train
- Faster delivery rates - takes seconds to unload

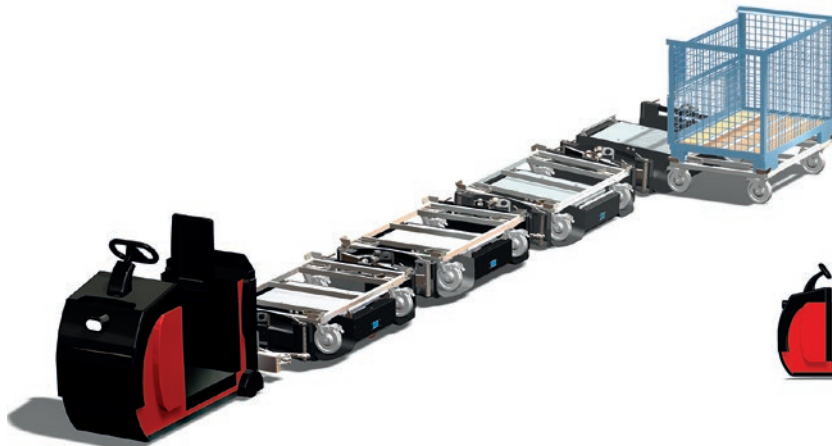
## CarryMore® mother cart 1500 is designed to hold:

- One Daughter cart 1200 x 800 mm or
- One Daughter cart 1200 x 1000 mm or
- Customized carts measuring up to 1625 x 1270 mm





# LiftLiner TwinLift

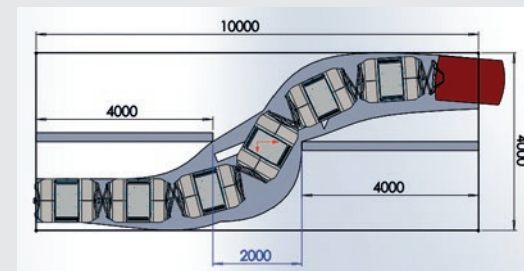
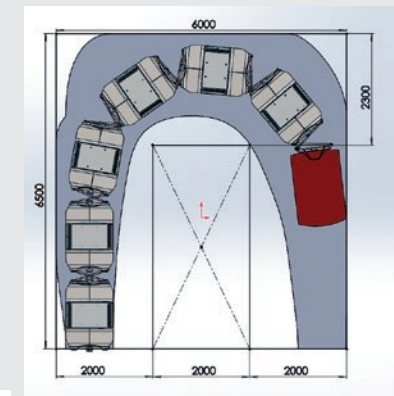
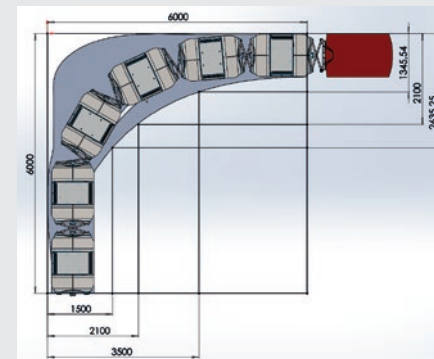


**LIFTLINER**



## TECHNICAL SPECIFICATION

External dimensions	820 x 600 mm, 1200 x 800 mm or 1200 x 1000
Working load capacity	1000 kg per loading bay
Tare weight	160 kg
Wheel material	Polyurethane wheels
Wheel size	200 mm
Height lowered/lifted	290/350 mm
Lifting range	60 mm
Overall length	1600 mm
Overall width	1000 mm
Maximum train load	6000 kg
Maximum speed	16 km/h
U turn radius with 3 Twins (6 loading bays)	ca 4500 mm
Ground clearance	0/60 mm
Maximum slope	10 degrees
Maximum length of the train	3 TwinLift Liftliners
Coupling system	Crossbar system with spherical coupling



# ElephantBoard® and Daughter Cart for the LiftLiner



TECHNICAL SPECIFICATION ELEPHANTBOARD (4 SHELVES)	
External dimensions	1450 x 820 x 1810 mm
Maximum Load capacity	500–1000 kg
Shelf material	Heavy-duty
Number of shelves	1–4
Distance between shelves	365 mm
Tare weight	65 kg
Wheel type	2 swivel and 2 fixed
Wheel material	Heavy-duty polyurethane wheels
Wheel size	200 mm
Surface treatment	Blue Zinc Plated

TECHNICAL SPECIFICATION DAUGHTER CART	
External dimensions	1240 x 840 x 318 mm (EURO) 1240 x 1040 x 318 mm (ISO)
Maximum Load capacity	1000 kg
Tare weight	29 kg
Wheel type	2 fixed and 2 swivel or 4 swivel
Wheel material	Polyamide wheels
Wheel size	200 mm
Surface treatment	Blue Zinc Plated

Also available in ISO size.

## BENEFITS WHEN USED WITH THE LIFTLINER

- Very compact and agile trolley train  
Enables a forklift-free production environment
- Requires only one operator making multiple deliveries on one trip
- Reduce overall operating costs
- Fast and safe (un)loading
- Loading/unloading from either side at point of delivery
- No sequencing needed – allows a more flexible supply of the production line
- Very ergonomic, safe and user-friendly solution

# Accessories – Wheel overview

## Ø 100 MM WHEELS



**CPD WHEEL**



**RUBBER WHEEL**



**POLYURETHANE WHEEL**



**ESD RUBBER WHEEL**



**ESD HYBRID WHEEL  
NON-MARKING**



**ESD POLYURETHANE  
WHEEL**



**CLEAN WHEEL**

## Ø 160 MM WHEELS



**POLYURETHANE WHEEL**



**SOLID WHEEL PA**

- All our wheels are equipped with ball bearings to ensure
  - lower rolling resistance
  - lower noise
  - long life span
- Very high load capacity and quality
- The wheels are designed to be used also in a tugger train





**MULTIPURPOSE DECK  
FOR 600 X 800 MM LEAN DOLLIES**

TECHNICAL SPECIFICATION	
External dimensions	598 x 798 mm
Material	Coated plywood
Max. load	500 kg
Supplied	Ready to use

**DESIGN**

- Compatible with 600 x 800 Lean Dollies

**BENEFITS**

- Provides a close deck for smaller packages
- Easy to use
- Equipped with two ergonomic handles



**ERGONOMIC HANDLE  
FOR TOWING OF DOLLIES**

TECHNICAL SPECIFICATION	
External dimensions	470 (L) x 405 (W) x 900 (H) mm
Surface treatment	Blue zinc plating
Weight	5 kg
Wheel type and size	CPD 100 mm
Supplied	Ready to use

**DESIGN**

- Both for 600 x 400 and 600 x 800 Lean Dollies

**BENEFITS**

- Ergonomic and safe way to move the dollies



**EASY STRAP  
FOR LEAN ADAPTOR PALLET**

TECHNICAL SPECIFICATION	
Modular length	2300 – 3800 mm
Material	Textile with metal hook
Max. load to be tripped	1000 kg = max. load to be distributed on one or more Adaptor Pallets
Max. load by stacking	1000 kg in total
Supplied	Ready to use and to be attached to the Adaptor Pallet.

**DESIGN**

- Adjustable length
- Directly attached to the Lean Adaptor Pallet

**BENEFITS**

- Safer transportation
- Easy to attach
- Reusable

To be used in connection with the Lean Adaptor Pallet and secure the transported boxes.



**COVER  
FOR LEAN SHELF WAGON**

TECHNICAL SPECIFICATION	
External dimensions	806 x 1260 x 1680 mm
Material	PVC (polyvinyl chloride)
Packing	Delivered as complete kit for 1 unit
Supplied	Delivered ready for use and to be attached to the Adaptor Pallet

Designed for closed transportation of the Lean Shelf Wagon between warehouses or from for example unloading areas outside to inside. The cover is very easy to flip over and open as well as closing.

### DESIGN

- Access from both long and short sides if needed
- Easy manual handling due to Velcro-closing
- Flip-up and attach sides for less space consuming handling

### BENEFITS

- Weather protection
- Protection against contamination
- Transport safety under truck transportation
- Internal transport safety
- Easy manual handling
- Space friendly solution



**DRIPPING PAN  
FOR 600 X 400 MM LEAN DOLLIES**

TECHNICAL SPECIFICATION	
External dimensions	604 x 404 mm
Material	PVC (Polyvinyl chloride)
Supplied	Ready to use

Designed to be placed between the Dolly and the packages transported.

### BENEFITS

- Prevents liquid dripping from boxes on the floor
- Prevents accidents
- The solution stays stackable while being attached with the dripping pan





**TOW TRACTOR  
DRAW BAR**

TECHNICAL SPECIFICATION	
Max. load on the draw bar	6000 kg
Max. load on the pin	2000 kg
Compatible with	Lean Dolly 600 x 500 mm Lean Dolly 600 x 400 mm Lean Dolly 600 x 800 mm Lean Dolly 600 x 1000 mm Lean Pallet Size Dolly Lean Shelf Wagon
Surface treatment	Blue zinc plated
Supplied	Assembled ready to mount on the tugger

## DESIGN

For the tractor types:  
Jungheinrich EZS350 and Linde P30/P50.  
It can also be adjusted for other tractor types.

## BENEFITS

- Enable towing of all Lean Dollies in various combinations.



**TOW TRACTOR  
BALL COUPLER**

TECHNICAL SPECIFICATION	
Max. load on the ball coupler	6 300 kg
Compatible with	E-Frame Quad Steer E-Frame Center Steer
Material	Steel
Design	Hitch ball

## DESIGN

For the tractor types:  
Jungheinrich EZS350 and Linde P30/P50.  
It can also be adjusted for other tractor types.

## BENEFITS

- Enable towing of all Lean Dollies in various combinations.

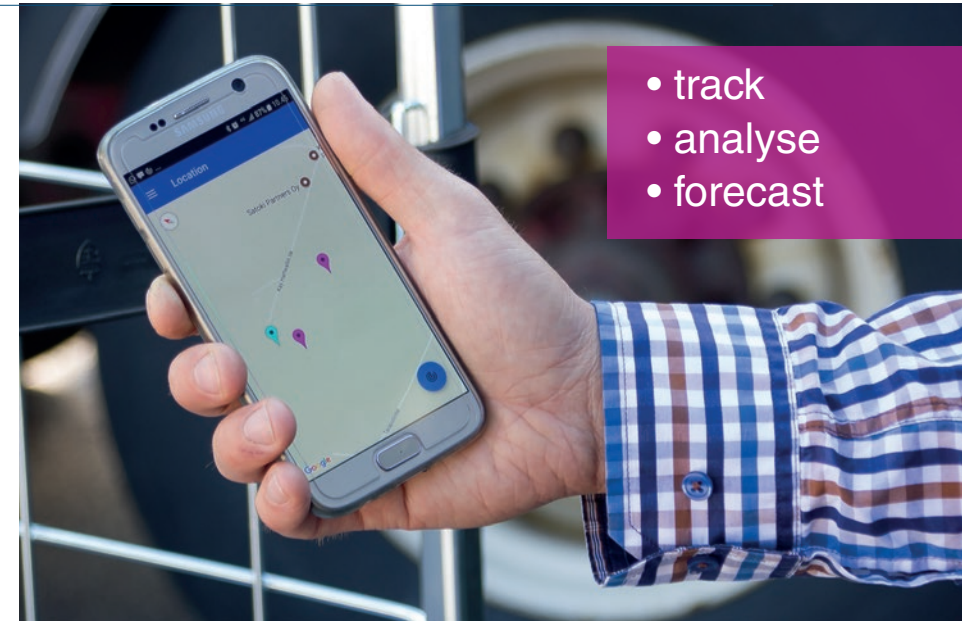




### GAIN MORE VISIBILITY OF YOUR ASSETS

Save costs with Visimore® Asset Management System. Know exactly how many units are in use and where they are. Manage your assets and make every of them work for you!

Visimore® is a complete solution including monitoring and analytics, data management and sensor technology.



- track
- analyse
- forecast

### EASY-TO-INSTALL SENSORS AND CLOUD-BASED DATA

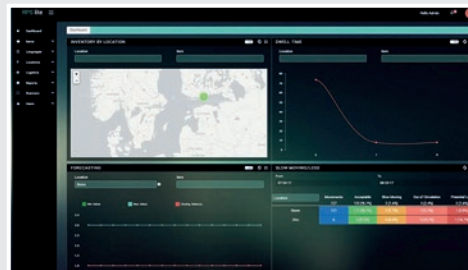
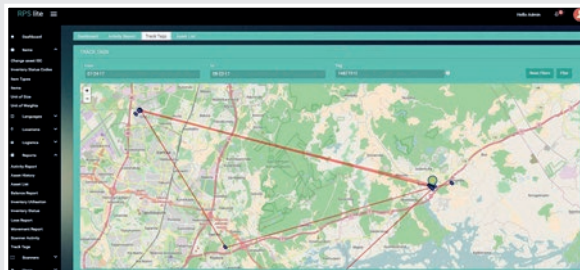
Visimore® is a truly new way to proactively manage the assets in your supply chain. It provides KPI's that ensure optimal usage of your load carriers to drive performance improvements. This industry specific solution has been designed to be configurable to address your business requirements with the least amount of disruption to your current operations. It will provide high definition visibility to your assets while simultaneously collecting valuable supply chain information.

### OPTIONS

- Secure operations by minimising asset out of stock
- Optimise your fleet size
- Increase utilisation rate
- Minimise asset losses
- Increase quality of historical data on assets

### HOW IT WORKS

- Visimore® tags are added to your assets
- DC network is easy to set up in a matter of hours.
- Assets are tracked both inside your DC with the network and outside by using a mobile application.
- This high quality and timely data is translated into meaningful business intelligence helping you managing your assets.



# THINK ABOUT THE TOTAL COST



COST SAVINGS  
UP TO 40 %

PRODUCTIVITY  
INCREASED BY  
UP TO 55%

3-4 TIMES LESS  
MANUAL HANDLING  
OPERATIONS  
PER TOTES

BETTER  
SAFETY AND  
ERGONOMICS



DAIMLER

MAHLE



BOSCH

SCHAEFFLER



**brose**  
Technik für Automobile

**Continental**

**K.HARTWALL**  
Logistics Efficiency through Innovation

contact-khw@k-hartwall.com  
www.k-hartwall.com